

A white sailboat with two people on board is sailing on the ocean. The boat has a white hull and wooden deck. The name "DIAMOND" is visible on the side. The background features white cliffs under a cloudy sky. The text "AC41" is displayed in a white box in the top right corner.

AC41



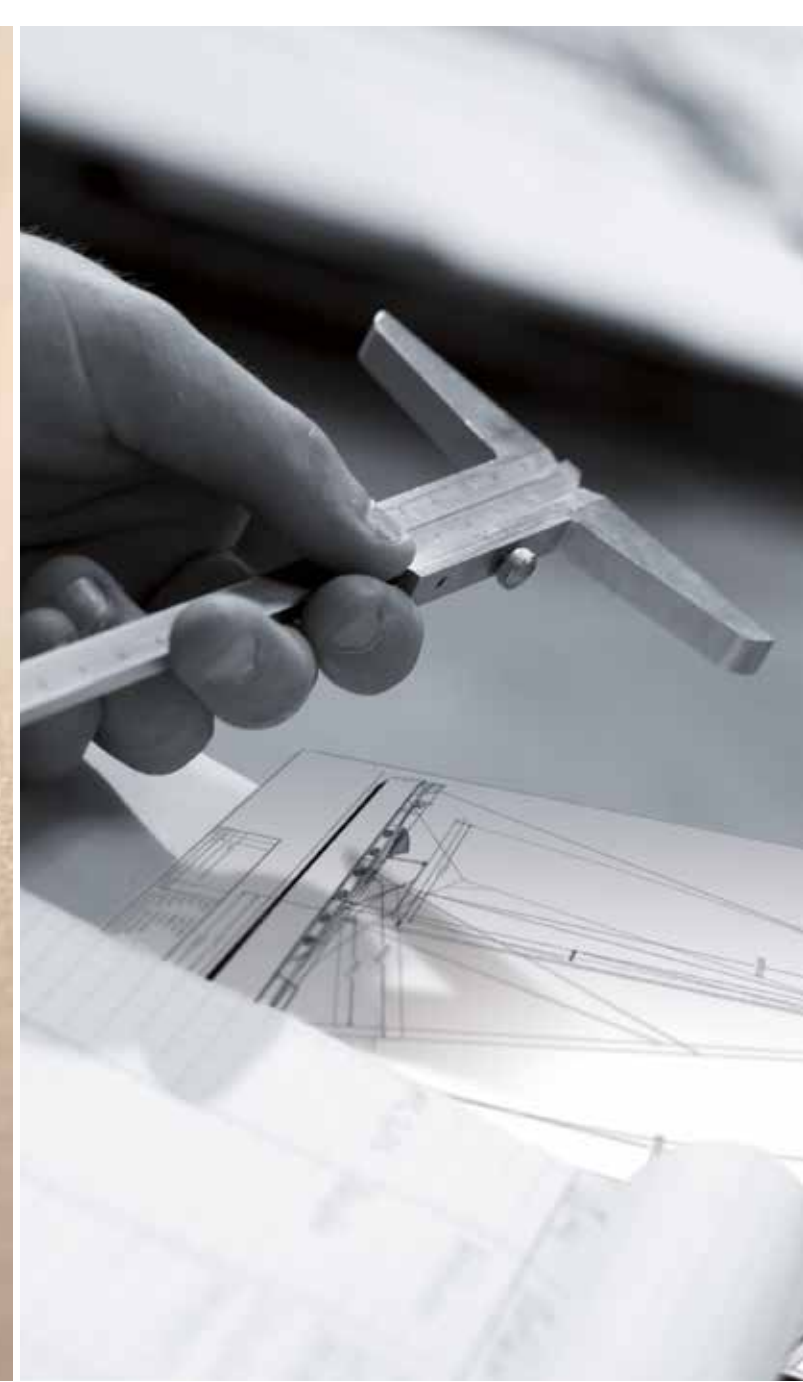
Moody®



elegant &
timeless design



safety &
seaworthiness

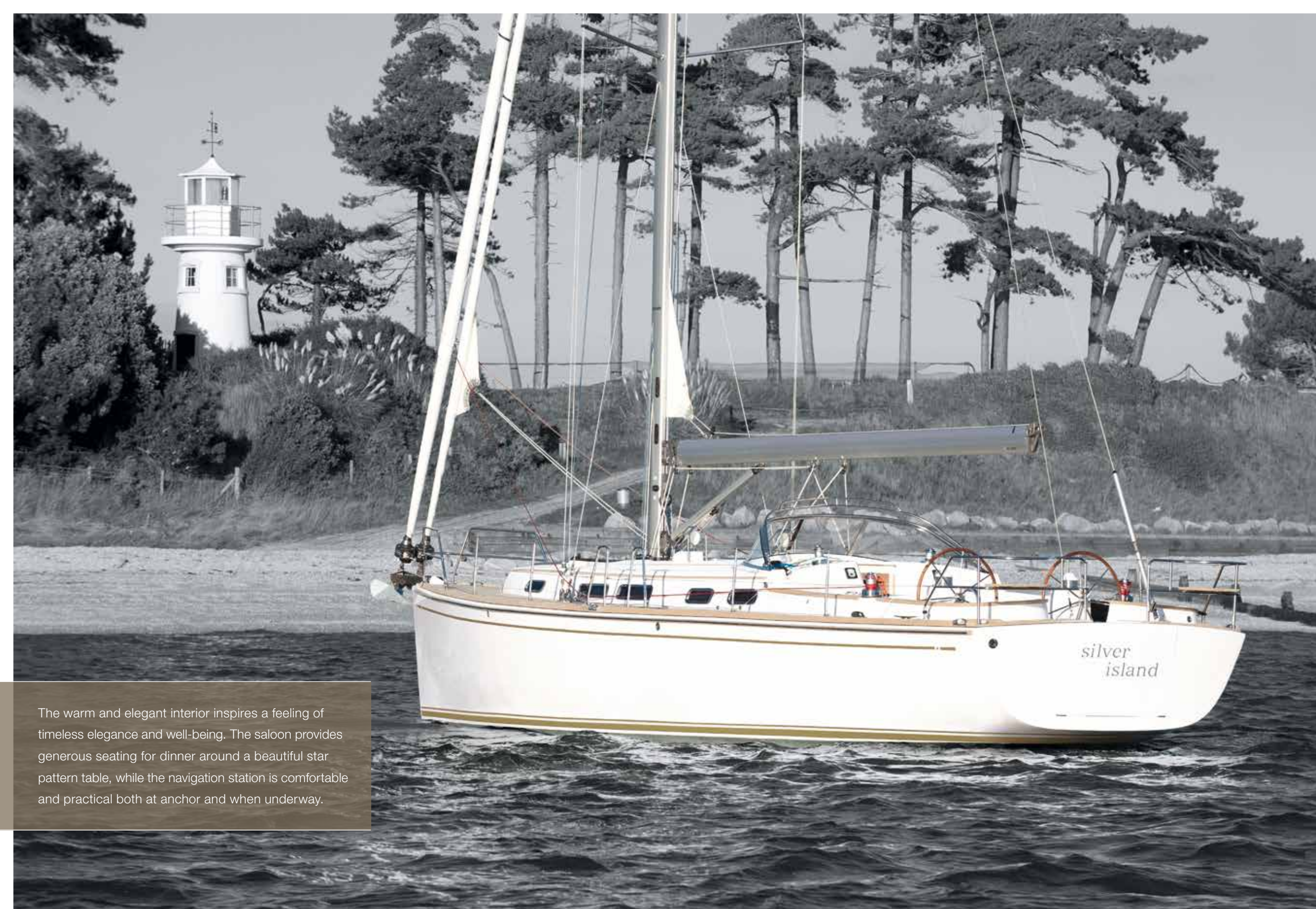


handcrafted quality
& high-tech



AC41





The warm and elegant interior inspires a feeling of timeless elegance and well-being. The saloon provides generous seating for dinner around a beautiful star pattern table, while the navigation station is comfortable and practical both at anchor and when underway.



elegant &
timeless design



Sturdy fixed windscreen



Dorade for permanent ventilation

elegant &
timeless design



Electrical winches



Stainless steel fairleads



Safe and comfortable cockpit



Safety and comfort are assured for everyone onboard the Moody Aft Cockpit 41 thanks to its fixed sturdy wind-screen and protected cockpit. The yacht also features powerful winches and ball-bearing blocks, as well as perfectly dimensioned chain plates, cleats and fairleads.



safety &
seaworthiness



Mast head with double forestay



Self-tacking jib



Twin furling forestays

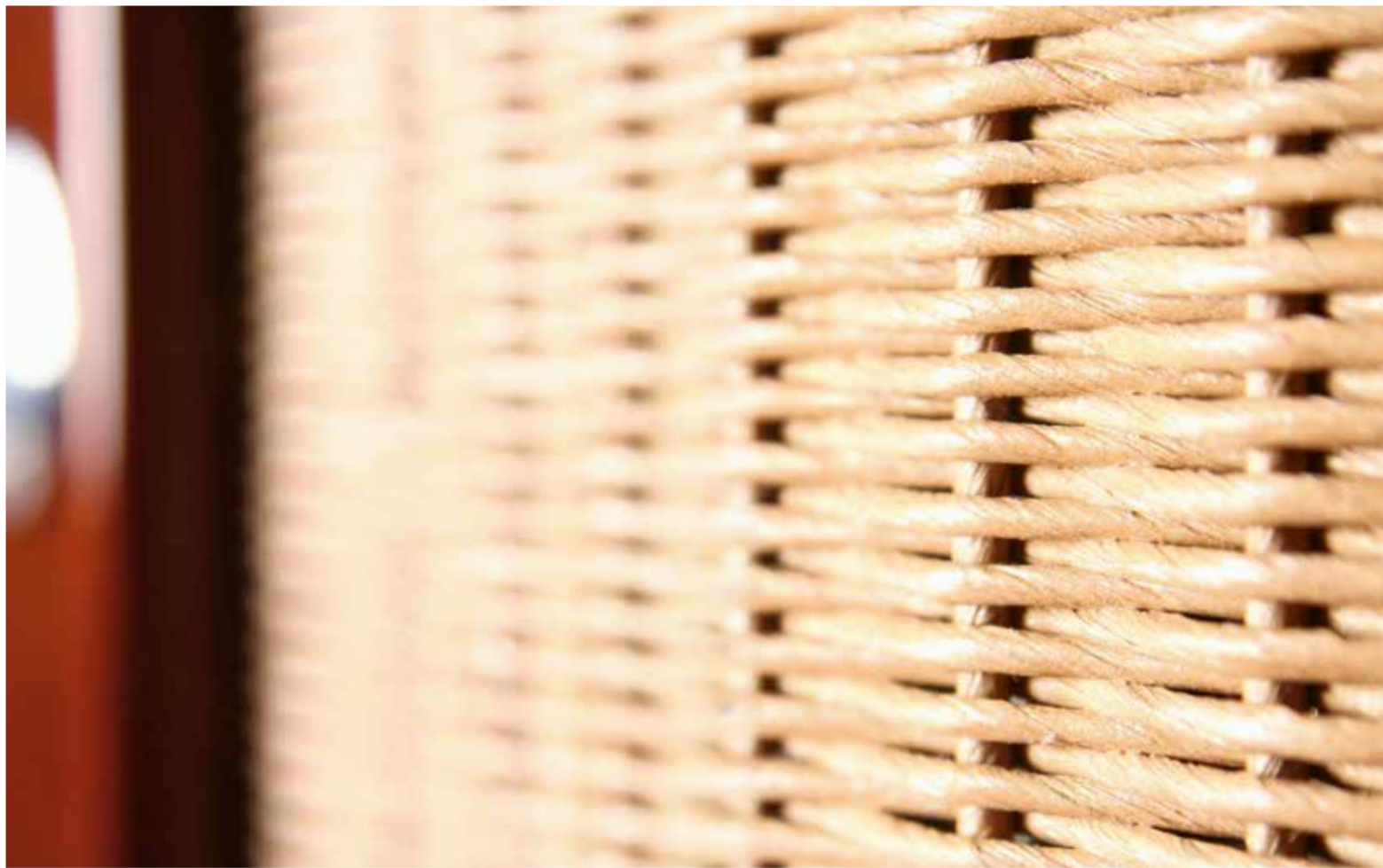


safety &
seaworthiness



Halyard jammer

Experience a fine and perfectly hand-made interior with solid woods of your choice plus a classic teak deck where handcrafted solidity meets modern design. Maritime requirements are in perfect harmony with the carefully designed lighting gear in the saloon.



Retractable bowthruster



Electrical anchor windlass with remote control

handcrafted quality
& high-tech



TV lifting system in saloon for full entertainment



Galley with large drawers, finished in teak



Large head with smart details



Electrical winch



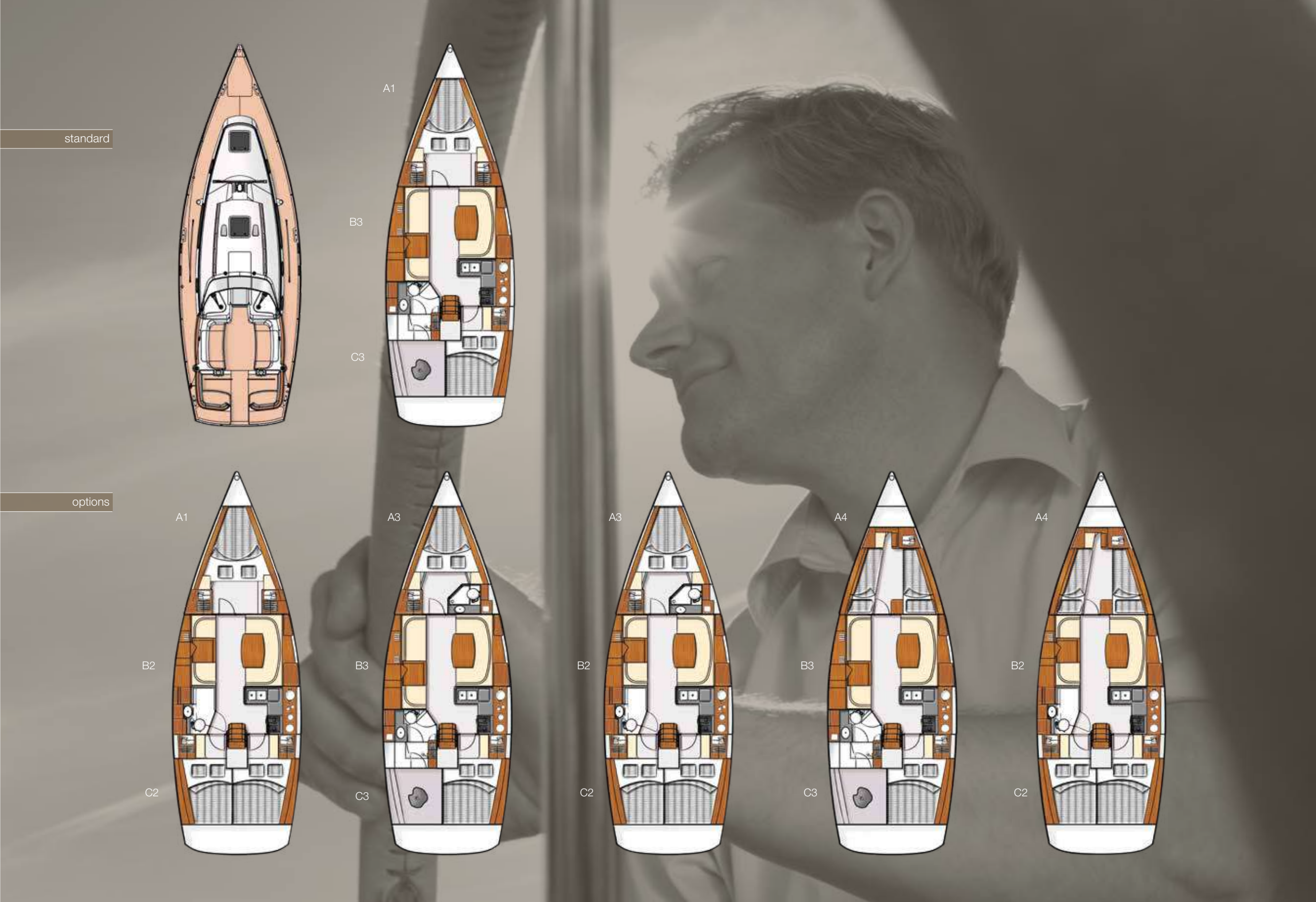
Smart-Light-System with a simple touch



Classic stern with platform



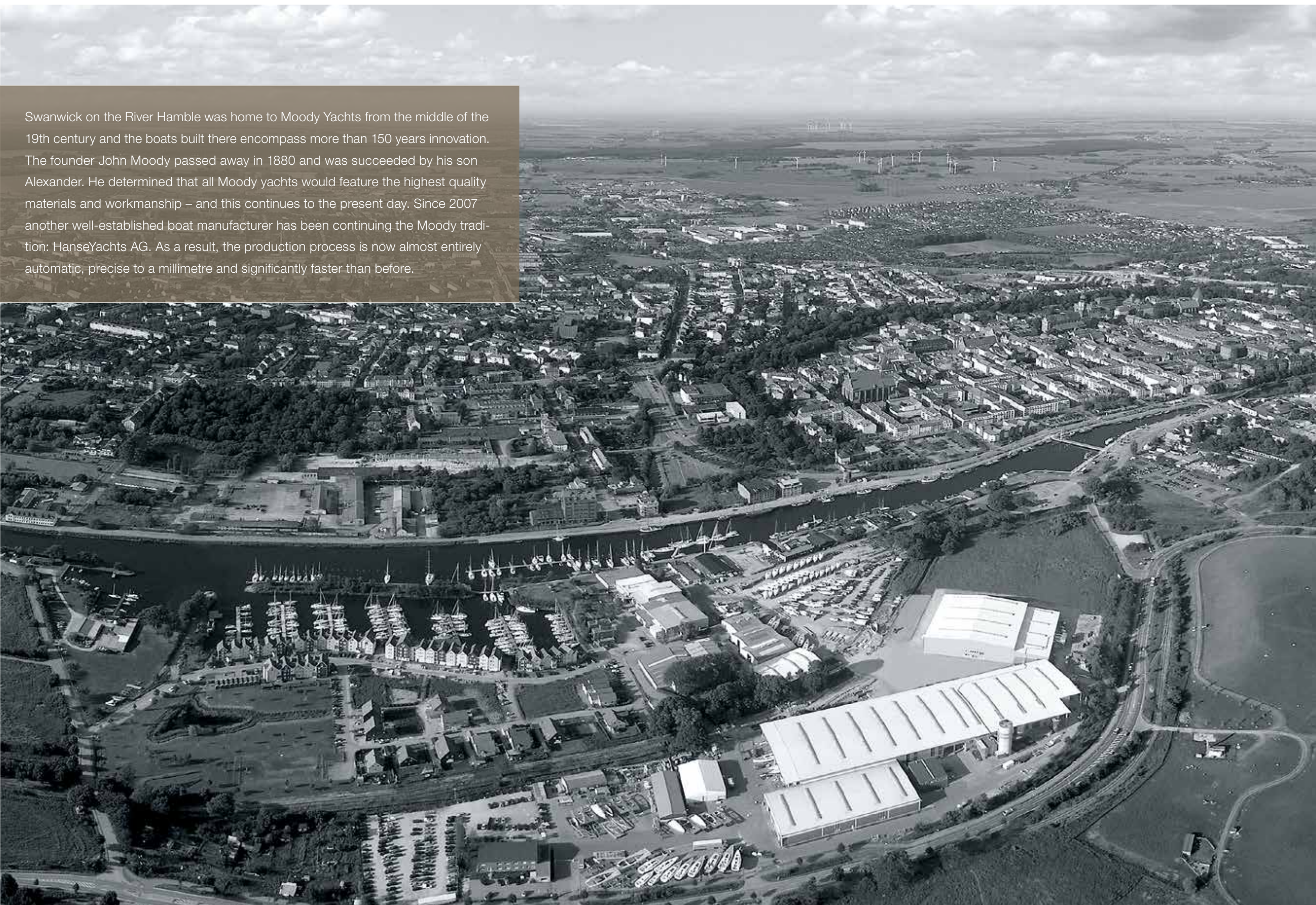
Protected dorade vent



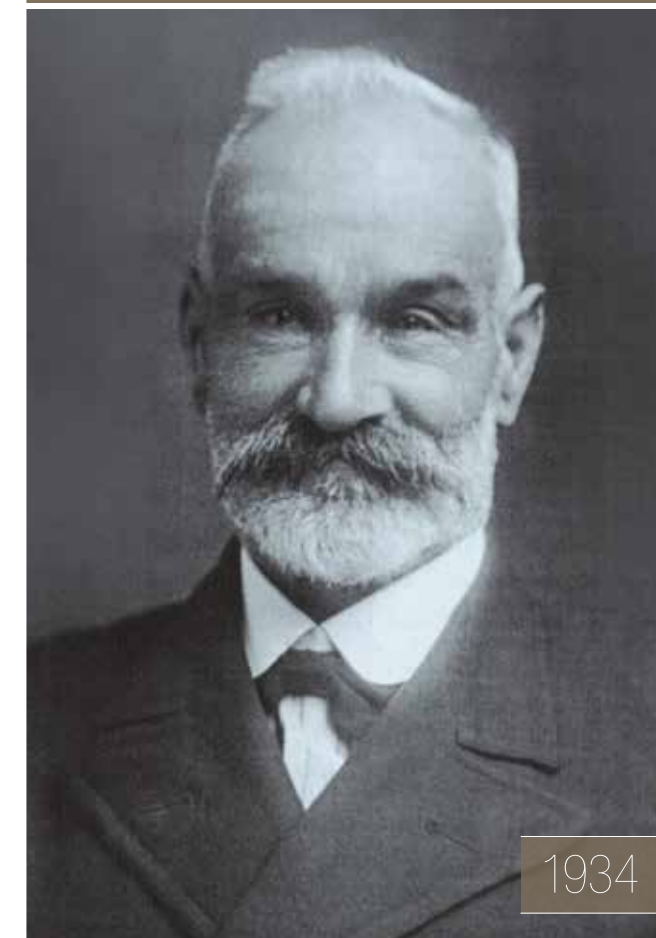
cabin concept & specifications

LOA	12.70 m	41'66"
LWL	10.90 m	35'76"
Beam	4.00 m	13'12"
Draft	2.00 m	6'6"
	1.65 m	5'5"
Displacement approx.	9.8 t	21,604 lbs
Ballast approx.	2.75 t	5,919 lbs
Engine approx.	Diesel 27.9 kW	38 hp
Fresh water	320 l	84.54 gal
Fuel tank	140 l	36.98 gal
CE Certificate	A (ocean)	
Main approx.	44.00 qm	474 sq ft
Self-tacking jib approx.	33.00 qm	355 sq ft
Genoa 140 % approx.	48.50 qm	522 sq ft
Gennaker approx.	110.00 qm	1,184 sq ft
Total sail area approx.	92.50 qm	996 sq ft
Rig	I 15.52 m	48'93"
	J 4.53 m	14'7"
	P 15.24 m	50'2"
	E 5.59 m	18'4"
Design	Dixon Yacht Design	
Interior	Design Unlimited	

Swanwick on the River Hamble was home to Moody Yachts from the middle of the 19th century and the boats built there encompass more than 150 years innovation. The founder John Moody passed away in 1880 and was succeeded by his son Alexander. He determined that all Moody yachts would feature the highest quality materials and workmanship – and this continues to the present day. Since 2007 another well-established boat manufacturer has been continuing the Moody tradition: HanseYachts AG. As a result, the production process is now almost entirely automatic, precise to a millimetre and significantly faster than before.



moody yard
tradition & vision



1934

Alexander Herbert Moody – Grandson of the Moody founder defined Moody's high quality characteristics.



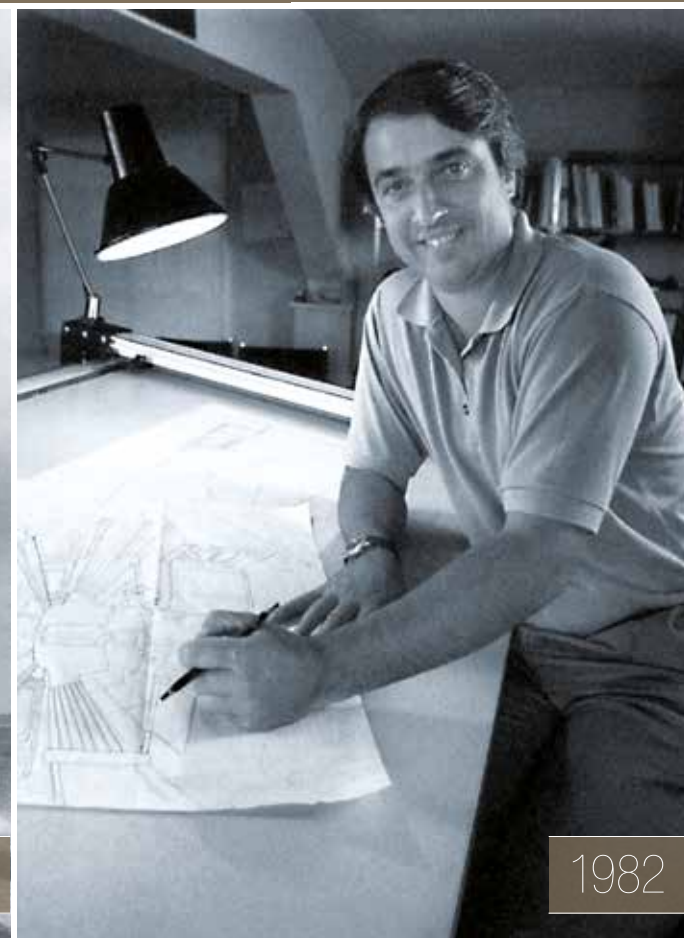
1935

The "Vindilis", the first Moody yacht.



1972

Moody 44 – The first yacht carrying the Moody name, was completed after three years of development.



1982

Moody 47/471 – First yacht designed by Bill Dixon.



1987

Moody Eclipse 33 – Designed by Bill Dixon.



2007

Moody DS45 – With their first deck saloon HanseYachts manages to transfer tradition to modernity.



2008

Moody AC41 – Combines the best of modern design and engineering with the traditional values associated with Moody Yachts.

tradition & history

material exterior

hull — gelcoat colours

Standard — Off White

waterline — gelcoat colours

Option — Lago Grey

Option hull & waterline — painted

The hull and waterline can be painted in almost every colour according to the Alexseal Yacht Coating Selection. Please ask your dealer.

Cloud White

Whisper Gray

Sunfast Red

Ethereal Blue

Flag Blue

Moon Dust

Eggshell White

option cockpit upholstery

option maindrop, bimini, sprayhood & canopy

Cream

Light Grey

Dark Grey

Taupe

Espresso

Sunset

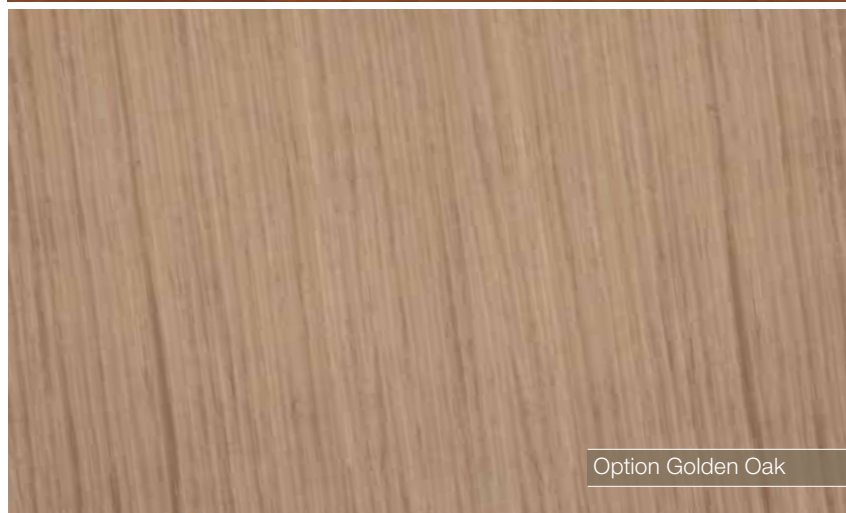
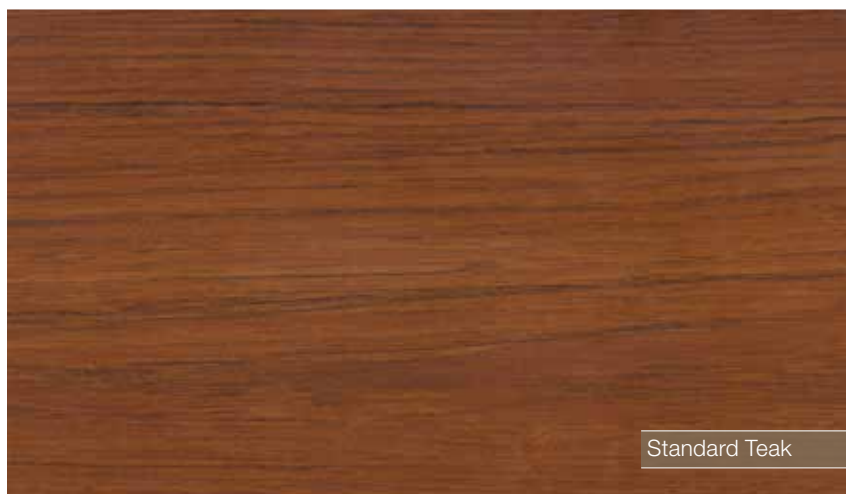
Regatta

Grapey

Carbon

Snow

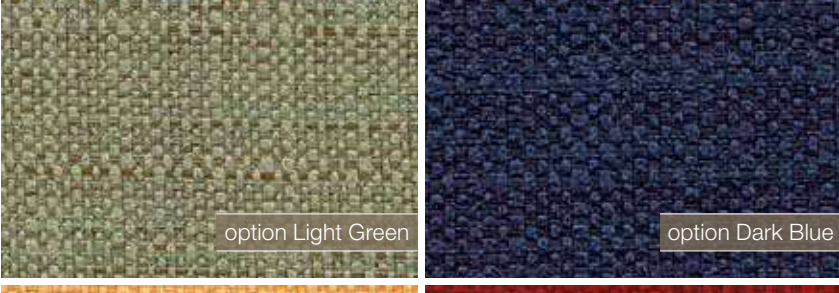
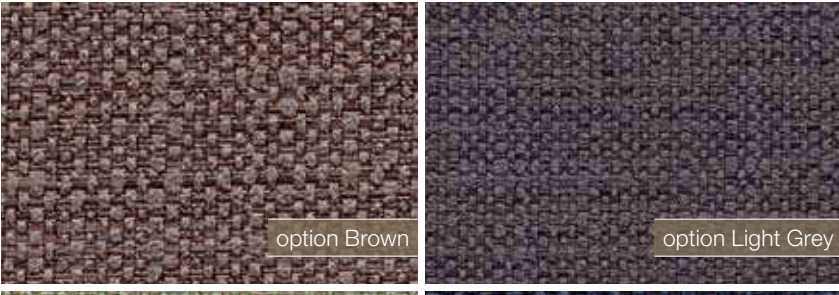
colours & materials
make it yours



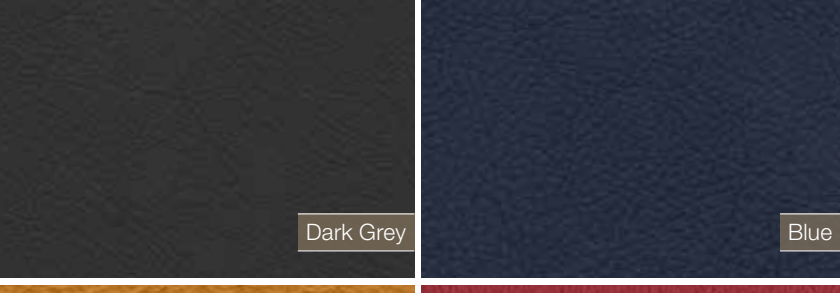
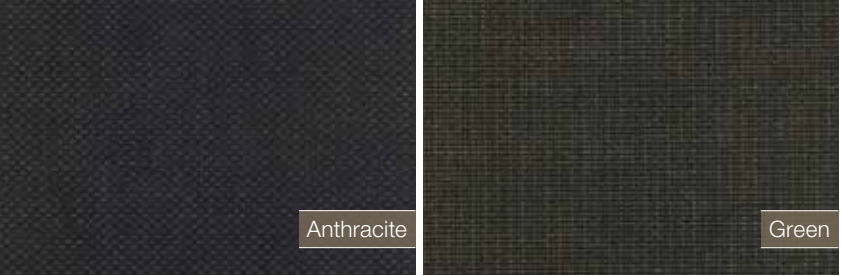
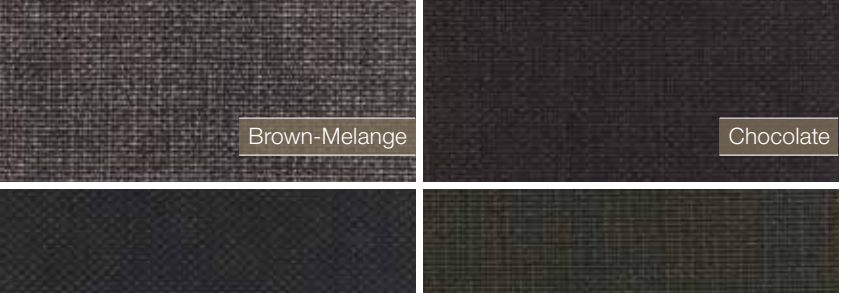
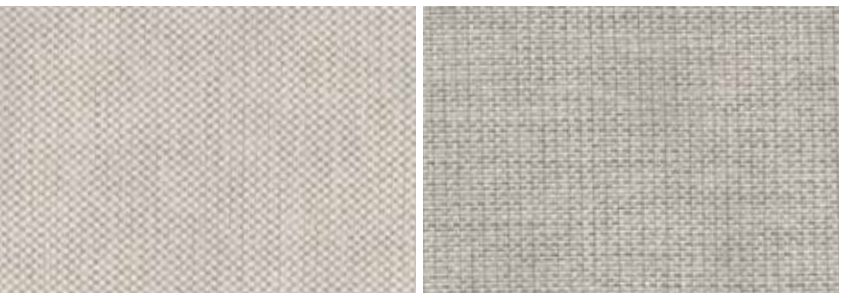
interior wood



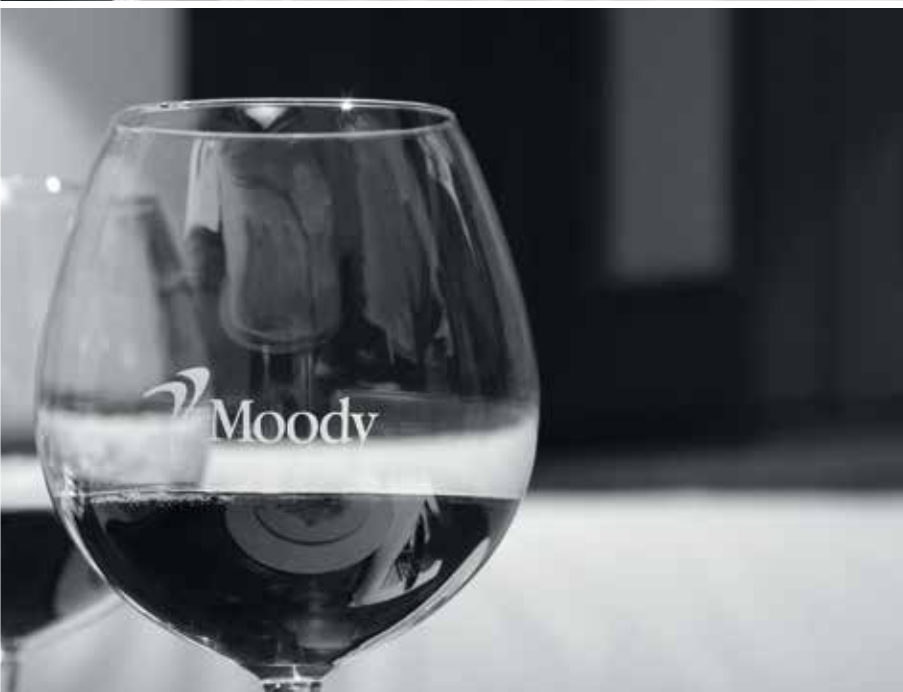
floor carpet



saloon, sofa & navigators seat



Red



FUSION MS-AV750 multimedia radio, CD/DVD player, VHF, AUX, USB, LCD colour display, four individual audio zones configurable



Fusion MS-RA205 Multimedia radio with bluetooth – for saloon and cockpit



FUSION MS-DKIPUSB docking station for iPod/iPhone, USB, Android



WLAN access point



2 High-end 2-way speakers in cockpit



2 High-end 2-way speakers in saloon



FUSION MS-NRX



2 High-end 2-way speakers in cockpit



2 High-end 2-way speakers in saloon

entertainment packages



Raymarine i70 multifunction display at helm position, incl. transducer (wind)



Raymarine eS97 GPS chartplotter at helm position

basic upgrade



Raymarine GS95 high-end glass bridge GPS chartplotter at chart table, at helm position



Raymarine Evolution Autopilot with p70Rs display



Raymarine VHF 260 at chart table, incl. wireless remote handset

navigation packages

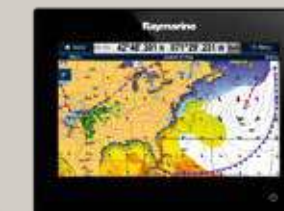


2 Raymarine i70s multifunction displays, 1 per helm station, incl. transducer (wind)



Raymarine eS127 GPS chartplotter at helm position

plus upgrade



Raymarine gS125 high-end glass bridge GPS chartplotter at helm position



Raymarine Evolution Autopilot with p70Rs display



Raymarine 260 VHF at chart table incl. 2nd wireless handset



Protected cockpit with windscreen



Elvstrøm laminate cruising sails



Electrical winches



Sprayhood



Teak on side decks



Electrical toilet



Furling mainsail



Lazy jack and bag



Blinds for windows and hatches

options & more
it's your choice

Moody
Ladebower Chaussee 11
D-17493 Greifswald
www.moodyboats.com



 **Moody®**